



TOLL FREE 1-800-392-0146

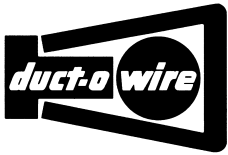
www.hoist-parts.com
parts@sisscohoist.com

SISSCO ONLINE HOIST PARTS DISTRIBUTION CENTER MANUALS



A Reputation for Service Since 1972
Certified WBE

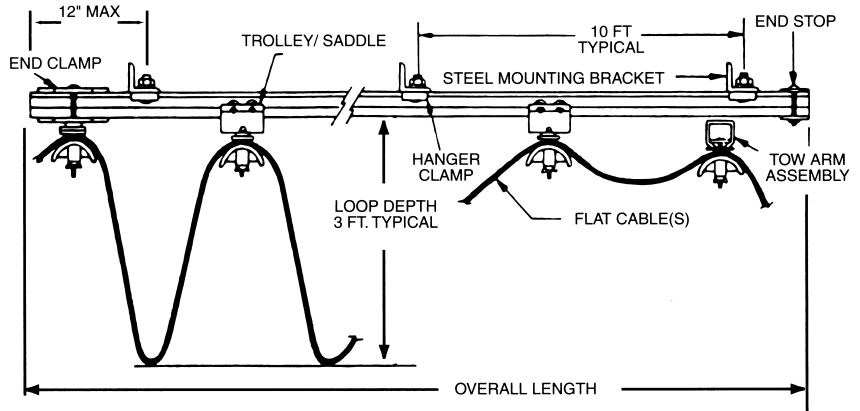




INSTALLATION INSTRUCTIONS • ALUMA-TRACK SYSTEM

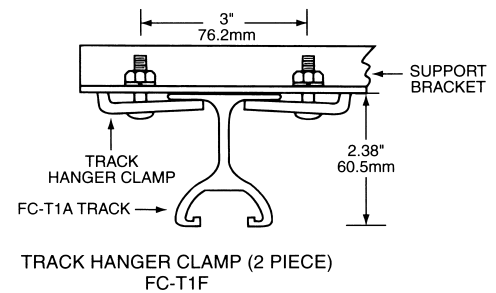
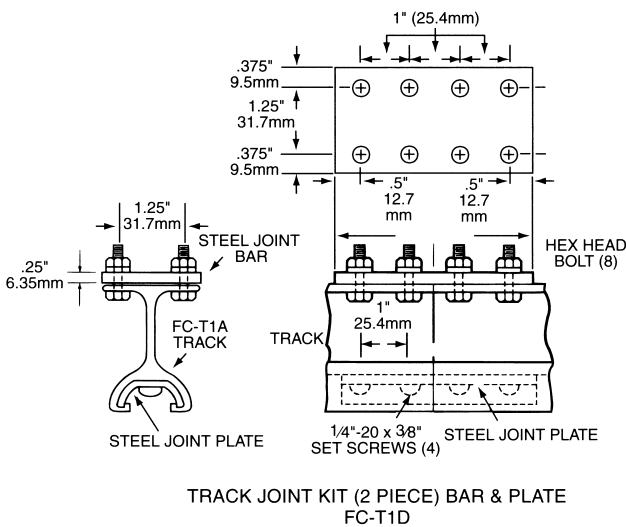
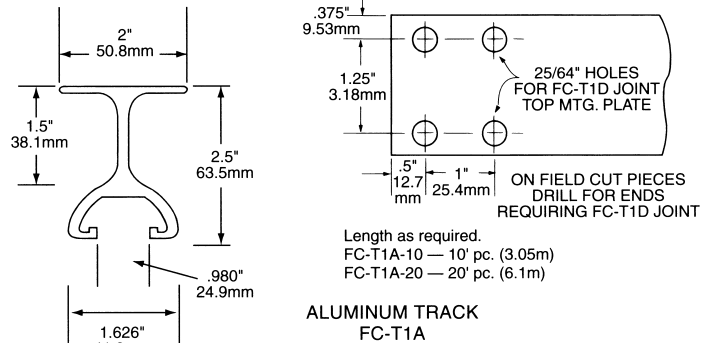
TYPICAL SYSTEM LAYOUT

CAUTION
 MAKE CERTAIN POWER SUPPLY IS DISCONNECTED BEFORE INSTALLING, REPAIRING, OR WORKING IN THE PROXIMITY OF ANY ELECTRICAL SYSTEM. ONLY QUALIFIED ELECTRICAL PERSONNEL SHOULD INSTALL OR REPAIR THESE PRODUCTS.

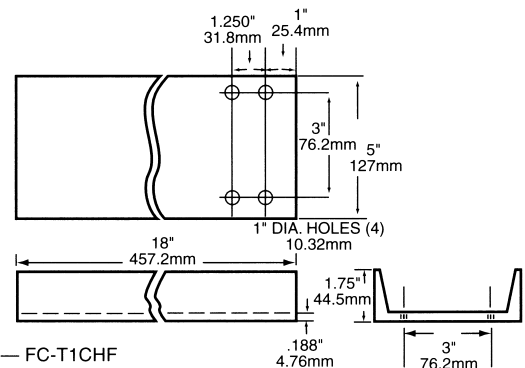
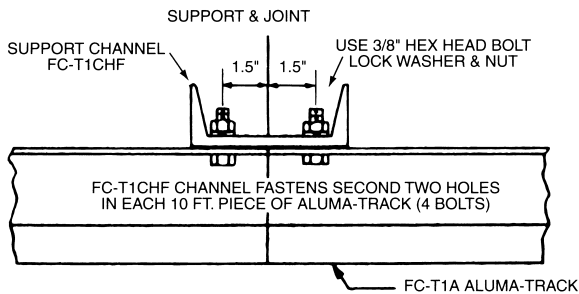


STEP 1: SUPPORTING TRACK SECTIONS

The standard method to support track FC-T1A is to use the FC-T1D track joint assembly and the FC-T1F track hanger. Track hangers are mounted on the angle iron support brackets which are spaced 10 ft. (max.) apart in straight runs and 5 ft. (max.) apart in curves.

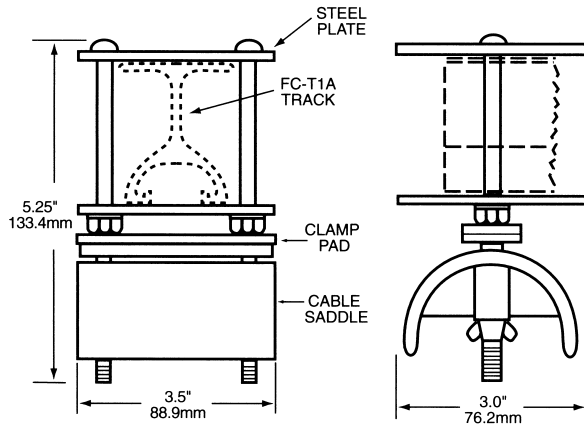


ALTERNATE METHOD: The FC-T1CHF channel bracket can also be used to support the track. The adjoining track ends are bolted to the bracket in a butted joint. No joint assemblies or hangers are required when using the 10 ft. sections of Aluma-Track.



STEP 2: END CLAMP INSTALLATION

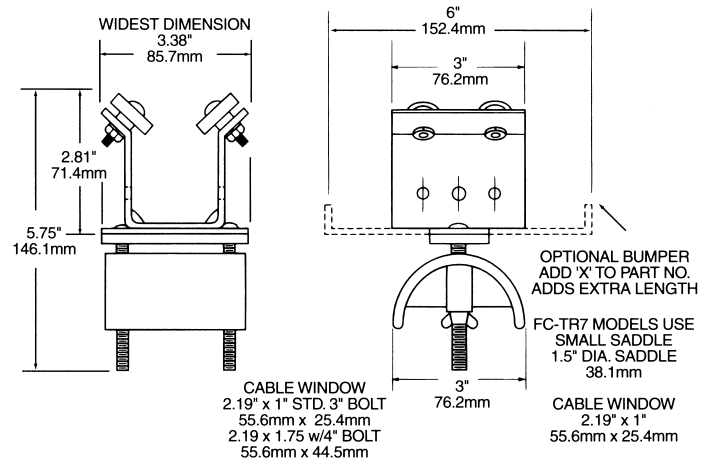
Install the end clamp assembly on the cable storage end of the track run.



END CLAMP / SADDLE ASSEMBLY
FC-T1C

STEP 3: TROLLEY INSTALLATION

Slide the intermediate trolleys on the track from the end opposite the end clamp assembly. Slide the control trolley on (if used) after the intermediate trolleys.

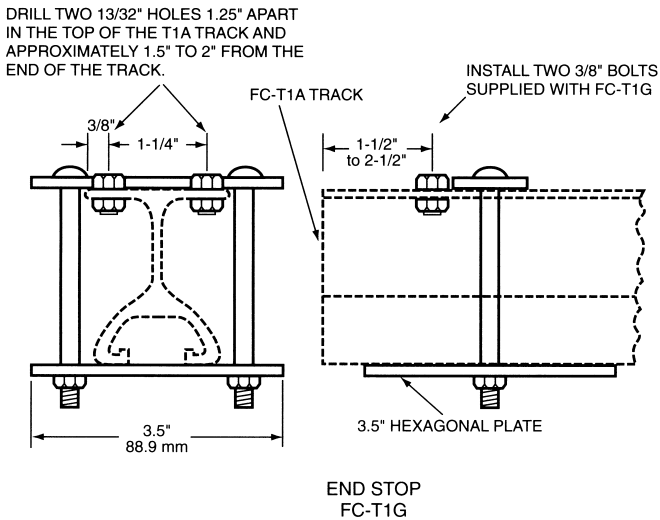


All trolley wheels are 1" diameter and are replaceable.

TROLLEY ASSEMBLY
FC-TR6

STEP 4: END STOP INSTALLATION

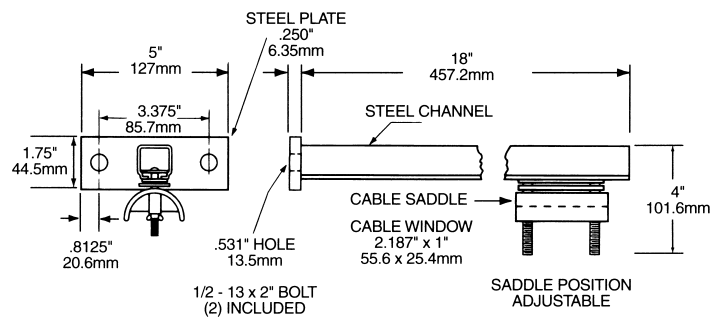
Install the end stop assembly on the track end opposite the end clamp assembly after the trolleys are installed on the track.



END STOP
FC-T1G

STEP 5: TOW ARM / SADDLE ASSEMBLY INSTALLATION

Mount the tow arm on the moving equipment so that the tow arm travel is just under the track. The arm must aid in pushing the intermediate trolleys back on the return cycle.



Adjust the saddle to align with trolley saddles.

TOW ARM ASSEMBLY
FC-TB4

STEP 6: FLAT CABLE INSTALLATION

Beginning at one end of the system, feed the flat cable(s) through each of the saddles. Measure enough cable at the end clamp or tow end to make the connections for the terminal box or unit, and then

space the required loop distance from trolley to trolley through the rest of the system. Finger tighten the wing nuts on the saddles to clamp the cables firmly.

STEP 7: CABLE CONNECTORS

Install cable connectors on approved junction boxes and insert cables through the rubber bushings. Tighten the connector nut firmly. For outdoor systems, care must be taken to use either single or like size cables through cable connectors for water tightness. Installing cables through the bottom of a NEMA 4 type enclosure also helps prevent water going through the cable opening. A good seal is attained with the use of the shrink type fittings.

STEP 8: SYSTEM TEST

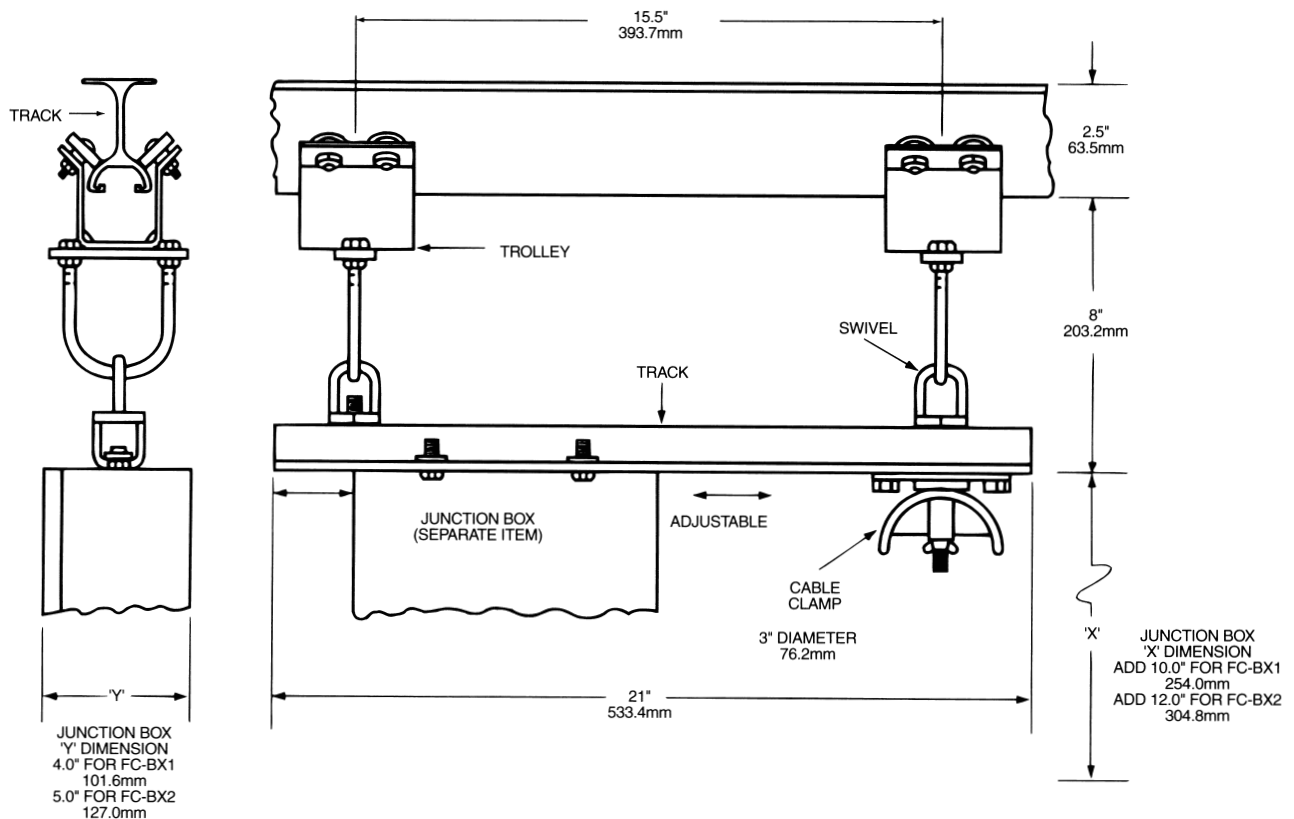
Run the entire system back and forth over the entire track length. Check to make sure that the cable loops do not stretch too tightly but have a small amount of slack when the system is fully extended. Tighten any saddles that have a sign of cable slippage. Also note whether the system travel is within the end stop and end clamp positions.

CAUTION: Cables should not be installed when ambient temperature is less than 14°F (-10°C).

CONTROL TROLLEY ASSEMBLY

The FC-TRC6 control trolley assembly is used for pendant tracks where the pendant station can travel independently from the movement of the crane

and/or hoist, allowing the operator freedom of motion under the hook.



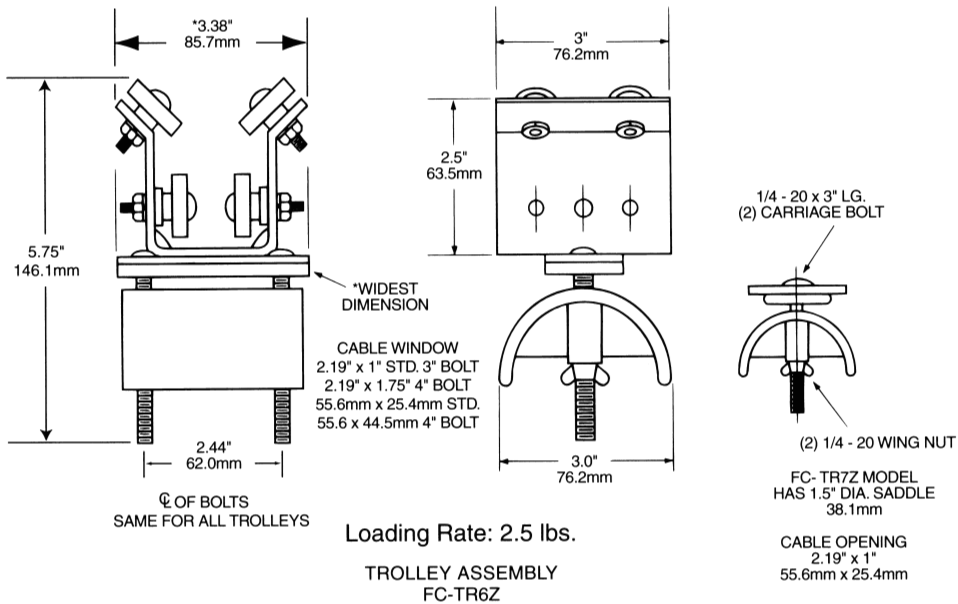
All trolley wheels are 1" diameter and are replaceable.
Load Rating: 25 lbs./4-wheel trolley.

CONTROL TROLLEY ASSEMBLY
FC-TRC6

TROLLEY ASSEMBLY WITH ANTI-LIFT ROLLERS

The FC-TR6Z and FC-TR7Z trolleys are equipped with anti-lift rollers. In curved systems, standard trolleys could be pulled into a tangent across the curve so the anti-lift feature allows proper tracking. It is also necessary to limit the distance between all

trolleys that must navigate the curve to approximately 75% of the curve radius. For example, with a six foot radius, the maximum distance between trolleys should be 4.5 feet. This will prevent binding of trolley wheels.



TOW TROLLEY ASSEMBLY

In some applications there is a preference for a tow trolley similar to the 'C'-track systems. The FC-TRT6 is built with the regular tow box for use with the FC-TB1 tow arm. It is equipped with the

anti-lift feature since the tow trolley will be moved a great deal by the tow arm. This also works on systems with curves.

