



**TOLL FREE 1-800-392-0146**

[www.hoist-parts.com](http://www.hoist-parts.com)  
[parts@sisscohoist.com](mailto:parts@sisscohoist.com)

**SISSCO ONLINE HOIST PARTS DISTRIBUTION CENTER MANUALS**



***A Reputation for Service Since 1972***  
***Certified WBE***





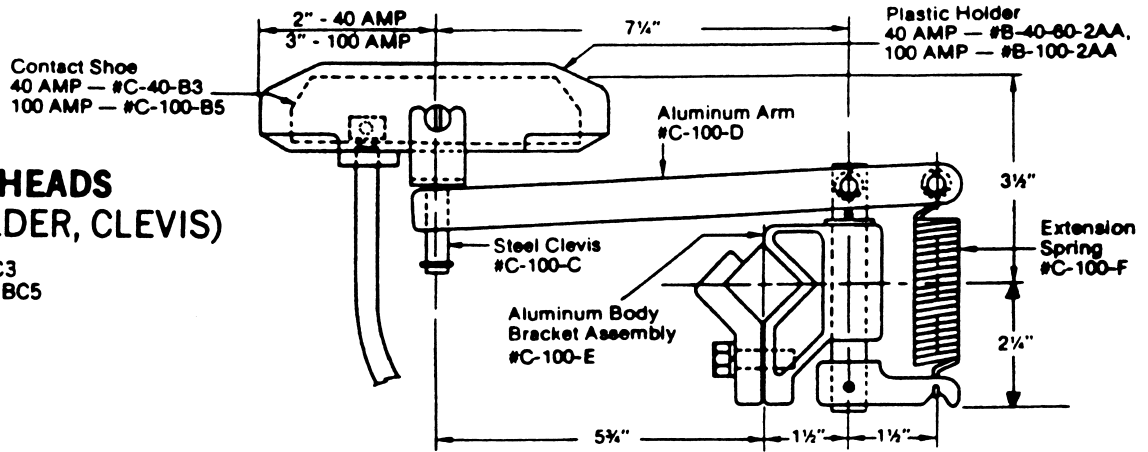
P.O. Box 519	1351 W. Second Street	379 Davis Road, Unit #3
Corona, California 92878-0519	Oconomowoc, Wisconsin 53066	Oakville, Ontario, Canada L6J 2X2
Phone: 909-735-8220; 800-543-3885; 800-735-1922	Phone: 262-567-2288	Phone: 905-844-1791; 800-361-9473
Fax: 909-735-2372; 800-752-6001; 800-735-0857	Fax: 262-567-0857	Fax: 905-844-2533; 800-663-0933

## COLLECTOR REPLACEMENT PARTS

### C — SERIES COLLECTORS

#### COMPLETE HEADS (SHOE, HOLDER, CLEVIS)

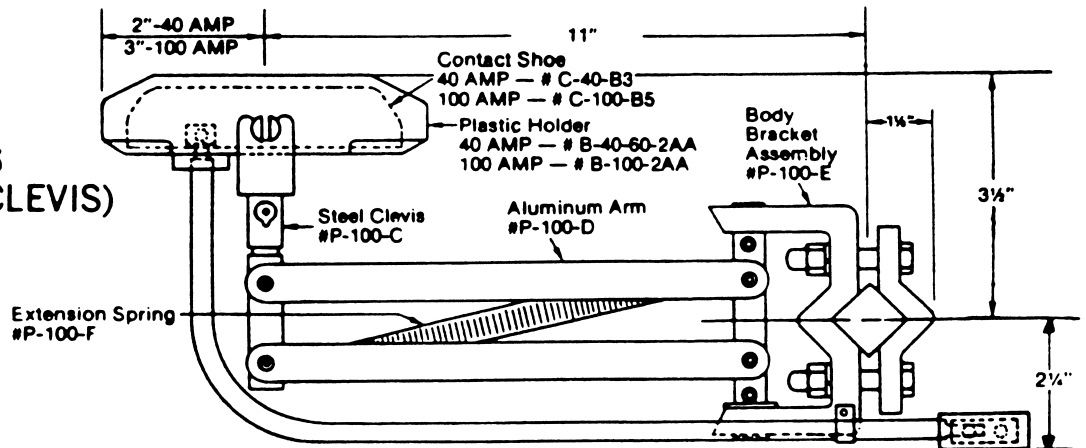
40 AMP — #C-40ABC3  
100 AMP — #C-100ABC5



### P — SERIES COLLECTORS

#### COMPLETE HEADS (SHOE, HOLDER, CLEVIS)

40 AMP — #P-40ABC3  
100 AMP — #P-100ABC5

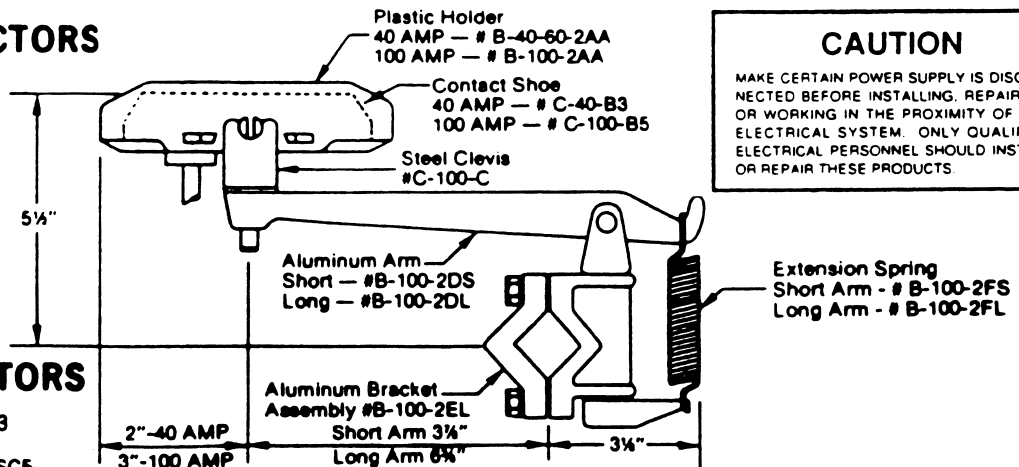


### B — SERIES COLLECTORS

#### COMPLETE HEADS SAME AS C-SERIES

#### COMPLETE COLLECTORS

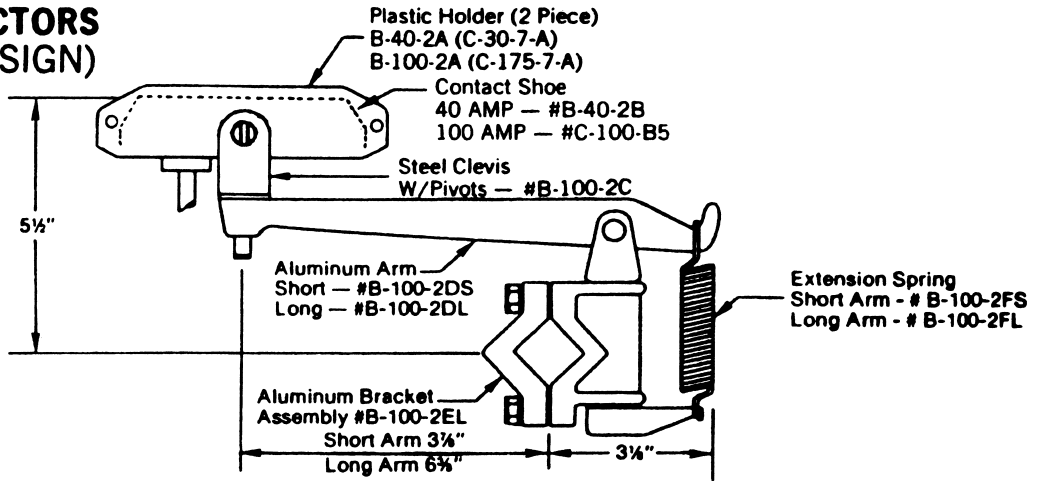
40 AMP SHORT ARM — #B-40-2SC3  
40 AMP LONG ARM — #B-40-2LC3  
100 AMP SHORT ARM — #B-100-2SC5  
100 AMP LONG ARM — #B-100-2LC5



**CAUTION**  
MAKE CERTAIN POWER SUPPLY IS DISCONNECTED BEFORE INSTALLING, REPAIRING, OR WORKING IN THE PROXIMITY OF ANY ELECTRICAL SYSTEM. ONLY QUALIFIED ELECTRICAL PERSONNEL SHOULD INSTALL OR REPAIR THESE PRODUCTS.

\*SEE OVERLEAF FOR OBSOLETE PARTS

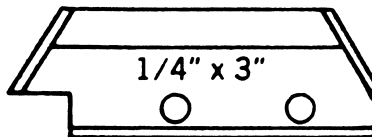
## B — SERIES COLLECTORS (OBSOLETE DESIGN)



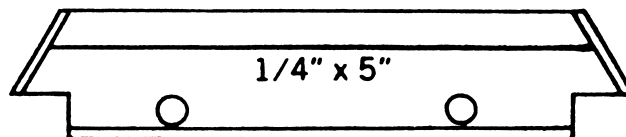
**NOTE:** Some older systems require 3/16" wide contact shoes. The following items should be ordered:  
 30 AMP Contact Shoe — #B-30-2B  
 75 AMP Contact Shoe — #B-75-2B  
 Plastic Holder For B-30-2B (2 piece) — #B-30-2A  
 Plastic Holder For B-75-2B (2 piece) — #B-75-2A

## COLLECTOR CONTACT SHOES (B, C & P—SERIES COLLECTORS)

### CURRENT DESIGN (GROOVED CONTACT SURFACE)

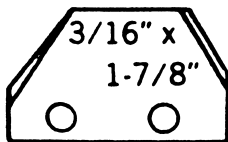


#C-40-B3

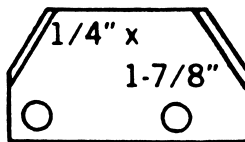


#C-100-B5 (B-100-2B5)

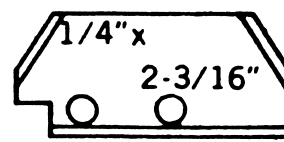
### OBSOLETE DESIGN (GROOVED CONTACT SURFACE)



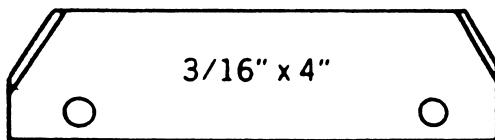
#B-30-2B



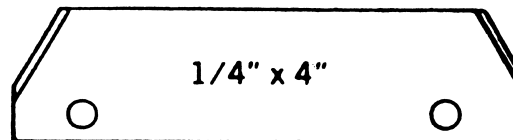
#B-40-2B



#B-40-2B2  
OBSOLETE — USE #C-40-B3



#B-75-2B (W2-100-7B)



#B-100-2B (D-175-7B)  
OBSOLETE — USE #C-100-B5

## MAINTENANCE PARTS

Catalog No.  
B-100-2ACT

### Cleaning Head Assembly —

Consists of two piece holder, steel clevis, and stainless steel wire cleaning brush  
(May adapt to existing B-Series or C-Series Collector Arms)

**NOTE:** Additional collector required with contact shoe to maintain power.

C-100-LCT

Complete Collector Assembly (C-Series) with . . .  
. . . Cleaning Brush in lieu of Contact Brush.

B-100-CT

Stainless steel wire cleaning brush only

B-100-TT

Micro hone only — 1/4" wide x 4" long

B-75-TT

Micro hone only — 3/16" wide x 4" long

### CAUTION

MAKE CERTAIN POWER SUPPLY IS DISCONNECTED BEFORE INSTALLING, REPAIRING, OR WORKING IN THE PROXIMITY OF ANY ELECTRICAL SYSTEM. ONLY QUALIFIED ELECTRICAL PERSONNEL SHOULD INSTALL OR REPAIR THESE PRODUCTS.