



TOLL FREE 1-800-392-0146

www.hoist-parts.com
parts@sisscohoist.com

SISSCO ONLINE HOIST PARTS DISTRIBUTION CENTER MANUALS



A Reputation for Service Since 1972
Certified WBE



Operating, Maintenance & Parts Manual

ETA680-1

ET-A Series

1/4, 1/2, 1, 1 1/2, 2,
3 & 5 Ton

Model Numbers

ET-05-A ET-30-A

ET-10-A ET-40-A

ET-20-A ET-60-A

ET-100-A

Follow all instructions and warnings for inspecting, maintaining and operating this trolley.

The use of any trolley presents some risk of personal injury or property damage. That risk is greatly increased if proper instructions and warnings are not followed. Before using this trolley, each operator should become thoroughly familiar with all warnings, instructions, and recommendations in this manual. Retain this manual for future reference and use.

Forward this manual to the trolley operator.

Failure to operate the equipment as directed in the manual may cause injury. Should you have any questions or have problems with this product, please call Coffing Hoists at **(800) 477-5003**.

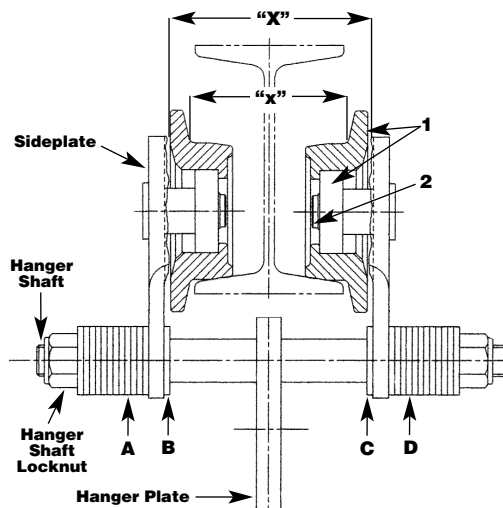


Figure 1 - ET-A Trolley

GENERAL INFORMATION

COFFING ET-A Trolleys are designed for use with hook mounted hoists with rated loads up to 5 Tons. Adjustment to a wide range of beam sizes is accomplished with the placement of spacer washers (See INSTALLATION).

The hoisting equipment described in these instructions is intended for industrial use only, and **should not be used to lift, support or otherwise transport people.**

LOAD RATINGS

Before installing, make certain that the capacity of the hoist does not exceed the rated load of the trolley, and that the supporting structure is capable of supporting the weight of the load, hoist and trolley with a generous factor for safety.

INSTALLATION

INSTALLATION & ADJUSTMENT

- Measure the I-beam flange width. Refer to Chart 3 - Spacer Washer Adjustment Chart for initial trolley adjustment. Check "X" dimension (See Figure 1) against Chart 3 and compare wheel flange spacing to beam flange width measurement before actually installing the trolley on the beam.
- Place trolley on beam and tighten the hanger shaft locknuts (See Chart 1 for Locknut Torque). The hanger shaft must extend completely through each locknut.
- Observe the trolley operation. The trolley should move freely with the wheel flanges as close as possible to the edge of the I-Beam. If it appears that the trolley sideplates could be moved closer together and still maintain freedom of movement, move one additional washer from location C to location D (See Figure 1).
- If additional adjustment is required, be sure to keep the hanger plate as near to the center of the trolley as possible. There should be no more than one washer difference between locations B and C (See Figure 1).

NOTE: ELCET units use ET20A trolleys for 1 ton and under. Washer count in Locations B and C may vary.

CURVED BEAM OPERATION

Coffing ET-A trolleys can operate on curved beams. Slightly increased wheel spacing may be required on curved beams. See Chart 1 for minimum recommended radius curves.

Chart 1 - Minimum Radius & Locknut Torque

| MODEL NUMBER | MINIMUM RADIUS | LOCKNUT TORQUE |
|--------------|----------------|----------------|
| ET-05-A | 36" | 125 ft-lbs |
| ET-10-A | 36" | 125 ft-lbs |
| ET-20-A | 48" | 125 ft-lbs |
| ET-30-A | 60" | 125 ft-lbs |
| ET-40-A | 60" | 125 ft-lbs |
| ET-60-A | 60" | 150 ft-lbs |
| ET-100-A | 60" | 150 ft-lbs |

MAINTENANCE

PERIODIC INSPECTION

This trolley should be inspected periodically for wear and its continued ability to support the load. The frequency of inspection will depend on the severity of trolley use. It is recommended that the user begin with a monthly inspection and extend periods to quarterly, semi-annually or annually based on monthly experience.

NOTE: Due to manufacturing tolerances and possible flange wear, the actual beam width may vary from that shown. The beam flange width should be checked before installation, and trolley spacing should be adjusted accordingly.

Chart 3 - Spacer Washer Adjustment (For Quantity & Location Refer to Figure 1)

| W-Beam Size & Weight | Flange Width | MODEL 1/4 TON | | | | | | | | MODEL 1/2 TON | | | | | | | | MODEL 1 TON | | | | | | | |
|----------------------|--------------|---------------|---------------|--------------------------|----|----|----|---------------|---------------|--------------------------|----|----|----|---------------|---------------|--------------------------|----|-------------|----|--|--|--|--|--|--|
| | | "X" Dim. (in) | "X" Dim. (in) | # of washers at location | | | | "X" Dim. (in) | "X" Dim. (in) | # of washers at location | | | | "X" Dim. (in) | "X" Dim. (in) | # of washers at location | | | | | | | | | |
| | | | | A | B | C | D | | | A | B | C | D | | | A | B | C | D | | | | | | |
| 4" x 13# | 4.060 | 5.319 | 4.275 | 17 | 6 | 6 | 17 | 5.319 | 4.275 | 17 | 6 | 6 | 17 | - | - | - | - | - | - | | | | | | |
| 5" x 16# | 5.000 | 6.337 | 5.235 | 13 | 10 | 10 | 13 | 6.337 | 5.235 | 13 | 10 | 10 | 13 | 6.258 | 5.235 | 14 | 9 | 10 | 15 | | | | | | |
| 5" x 19# | 5.030 | 6.337 | 5.235 | 13 | 10 | 10 | 13 | 6.337 | 5.235 | 13 | 10 | 10 | 13 | 6.258 | 5.235 | 14 | 9 | 10 | 14 | | | | | | |
| 6" x 9# | 3.940 | 5.257 | 4.155 | 18 | 5 | 6 | 17 | 5.257 | 4.155 | 18 | 5 | 6 | 17 | 5.178 | 4.155 | 18 | 5 | 5 | 18 | | | | | | |
| 6" x 12# | 4.000 | 5.257 | 4.155 | 18 | 5 | 6 | 17 | 5.257 | 4.155 | 18 | 5 | 6 | 17 | 5.178 | 4.155 | 18 | 5 | 5 | 18 | | | | | | |
| 6" x 15# | 5.990 | 7.297 | 6.195 | 9 | 14 | 14 | 9 | 7.297 | 6.195 | 9 | 14 | 14 | 9 | 7.218 | 6.195 | 10 | 13 | 14 | 10 | | | | | | |
| 6" x 16# | 4.030 | 6.377 | 4.275 | 17 | 6 | 6 | 17 | 6.377 | 4.275 | 17 | 6 | 6 | 17 | 5.298 | 4.275 | 18 | 5 | 6 | 18 | | | | | | |
| 6" x 20# | 6.020 | 7.297 | 6.195 | 9 | 14 | 14 | 9 | 7.297 | 6.195 | 9 | 14 | 14 | 9 | 7.218 | 6.195 | 10 | 13 | 14 | 10 | | | | | | |
| 6" x 25# | 6.080 | 7.417 | 6.315 | 9 | 14 | 15 | 8 | 7.417 | 6.315 | 9 | 14 | 15 | 8 | 7.338 | 6.315 | 9 | 14 | 14 | 10 | | | | | | |
| 8" x 10# | 3.940 | 5.527 | 4.155 | 18 | 5 | 6 | 17 | 5.527 | 4.155 | 18 | 5 | 6 | 17 | 5.178 | 4.155 | 18 | 5 | 5 | 18 | | | | | | |
| 8" x 13# | 4.000 | 5.257 | 4.155 | 18 | 5 | 6 | 17 | 5.257 | 4.155 | 18 | 5 | 6 | 17 | 5.178 | 4.155 | 18 | 5 | 5 | 18 | | | | | | |
| 8" x 15# | 4.015 | 5.257 | 4.155 | 18 | 5 | 6 | 17 | 5.257 | 4.155 | 18 | 5 | 6 | 17 | 5.178 | 4.155 | 18 | 5 | 5 | 18 | | | | | | |
| 8" x 18# | 5.250 | 6.577 | 5.475 | 12 | 11 | 11 | 12 | 6.577 | 5.475 | 12 | 11 | 11 | 12 | 6.498 | 5.475 | 13 | 10 | 11 | 13 | | | | | | |
| 8" x 21# | 5.270 | 6.577 | 5.475 | 12 | 11 | 11 | 12 | 6.577 | 5.475 | 12 | 11 | 11 | 12 | 6.498 | 5.475 | 13 | 10 | 11 | 13 | | | | | | |
| 8" x 24# | 6.500 | 7.777 | 6.675 | 7 | 16 | 16 | 7 | 7.777 | 6.675 | 7 | 16 | 16 | 7 | 7.698 | 6.675 | 8 | 15 | 16 | 8 | | | | | | |
| 8" x 28# | 6.535 | 7.777 | 6.675 | 7 | 16 | 16 | 7 | 7.777 | 6.675 | 7 | 16 | 16 | 7 | 7.818 | 6.795 | 7 | 16 | 16 | 8 | | | | | | |
| 8" x 31# | 7.995 | 9.337 | 8.235 | 1 | 23 | 23 | 0 | 9.337 | 8.235 | 1 | 23 | 23 | 0 | 9.258 | 8.235 | 1 | 22 | 22 | 2 | | | | | | |
| 8" x 35# | 8.020 | 9.337 | 8.235 | 1 | 23 | 23 | 0 | 9.337 | 8.235 | 1 | 23 | 23 | 0 | 9.258 | 8.235 | 1 | 22 | 22 | 2 | | | | | | |
| 10" x 12# | 3.960 | 5.251 | 4.155 | 18 | 5 | 6 | 17 | 5.251 | 4.155 | 18 | 5 | 6 | 17 | 5.178 | 4.155 | 18 | 5 | 5 | 18 | | | | | | |
| 10" x 15# | 4.000 | 5.257 | 4.155 | 18 | 5 | 6 | 17 | 5.257 | 4.155 | 18 | 5 | 6 | 17 | 5.178 | 4.155 | 18 | 5 | 5 | 18 | | | | | | |
| 10" x 17# | 4.010 | 5.257 | 4.155 | 18 | 5 | 6 | 17 | 5.257 | 4.155 | 18 | 5 | 6 | 17 | 5.178 | 4.155 | 18 | 5 | 5 | 18 | | | | | | |
| 10" x 19# | 4.020 | 5.257 | 4.155 | 18 | 5 | 6 | 17 | 5.257 | 4.155 | 18 | 5 | 6 | 17 | 5.178 | 4.155 | 18 | 5 | 5 | 18 | | | | | | |
| 10" x 22# | 5.750 | 7.057 | 5.955 | 10 | 13 | 13 | 10 | 7.057 | 5.955 | 10 | 13 | 13 | 10 | 6.978 | 5.955 | 11 | 12 | 13 | 11 | | | | | | |
| 10" x 26# | 5.770 | 7.057 | 5.955 | 10 | 13 | 13 | 10 | 7.057 | 5.955 | 10 | 13 | 13 | 10 | 6.978 | 5.955 | 11 | 12 | 13 | 11 | | | | | | |
| 10" x 30# | 5.810 | 7.177 | 6.075 | 10 | 13 | 14 | 9 | 7.177 | 6.075 | 10 | 13 | 14 | 9 | 7.098 | 6.075 | 10 | 13 | 13 | 11 | | | | | | |
| 10" x 33# | 7.960 | 9.217 | 8.115 | 1 | 22 | 22 | 1 | 9.217 | 8.115 | 1 | 22 | 22 | 1 | 9.258 | 8.235 | 1 | 22 | 22 | 2 | | | | | | |
| 10" x 39# | 7.985 | 9.262 | 8.160 | 1 | 22 | 23 | 0 | 9.262 | 8.160 | 1 | 22 | 23 | 0 | 9.258 | 8.235 | 1 | 22 | 22 | 2 | | | | | | |
| 10" x 45# | 8.020 | 9.262 | 8.160 | 1 | 22 | 23 | 0 | 9.262 | 8.160 | 1 | 22 | 23 | 0 | 9.258 | 8.235 | 1 | 22 | 22 | 2 | | | | | | |
| 12" x 14# | 3.970 | 5.257 | 4.155 | 18 | 5 | 6 | 17 | 5.257 | 4.155 | 18 | 5 | 6 | 17 | 5.178 | 4.155 | 18 | 5 | 5 | 18 | | | | | | |
| 12" x 16# | 3.990 | 5.257 | 4.155 | 18 | 5 | 6 | 17 | 5.257 | 4.155 | 18 | 5 | 6 | 17 | 5.178 | 4.155 | 18 | 5 | 5 | 18 | | | | | | |
| 12" x 19# | 4.005 | 6.257 | 4.155 | 18 | 5 | 6 | 17 | 6.257 | 4.155 | 18 | 5 | 6 | 17 | 5.178 | 4.155 | 18 | 5 | 5 | 18 | | | | | | |
| 12" x 22# | 4.030 | 6.377 | 4.275 | 17 | 6 | 6 | 17 | 6.377 | 4.275 | 17 | 6 | 6 | 17 | 5.178 | 4.155 | 18 | 5 | 5 | 18 | | | | | | |
| 12" x 26# | 6.490 | 7.777 | 6.675 | 7 | 16 | 16 | 7 | 7.777 | 6.675 | 7 | 16 | 16 | 7 | 7.698 | 6.675 | 8 | 15 | 16 | 8 | | | | | | |
| 12" x 30# | 6.520 | 7.777 | 6.675 | 7 | 16 | 16 | 7 | 7.777 | 6.675 | 7 | 16 | 16 | 7 | 7.818 | 6.795 | 7 | 16 | 16 | 8 | | | | | | |
| 12" x 35# | 6.560 | 7.897 | 6.795 | 7 | 16 | 17 | 6 | 7.897 | 6.795 | 7 | 16 | 17 | 6 | 7.818 | 6.795 | 7 | 16 | 16 | 8 | | | | | | |
| 12" x 40# | 8.005 | 9.337 | 8.235 | 1 | 22 | 23 | 0 | 9.337 | 8.235 | 1 | 22 | 23 | 0 | 9.258 | 8.235 | 1 | 22 | 22 | 2 | | | | | | |
| 12" x 45# | 8.045 | 9.337 | 8.235 | 1 | 22 | 23 | 0 | 9.337 | 8.235 | 1 | 22 | 23 | 0 | 9.258 | 8.235 | 1 | 22 | 22 | 2 | | | | | | |
| 14" x 22# | 5.000 | 6.337 | 5.235 | 13 | 10 | 10 | 13 | 6.337 | 5.235 | 13 | 10 | 10 | 13 | 6.258 | 5.235 | 18 | 5 | 6 | 18 | | | | | | |
| 14" x 26# | 5.025 | 6.337 | 5.235 | 13 | 10 | 10 | 13 | 6.337 | 5.235 | 13 | 10 | 10 | 13 | 6.258 | 5.235 | 18 | 5 | 6 | 18 | | | | | | |
| 14" x 30# | 6.730 | 8.017 | 6.915 | 6 | 17 | 17 | 6 | 8.017 | 6.915 | 6 | 17 | 17 | 6 | 7.938 | 6.915 | 7 | 16 | 17 | 7 | | | | | | |
| 14" x 34# | 6.745 | 8.017 | 6.915 | 6 | 17 | 17 | 6 | 8.017 | 6.915 | 6 | 17 | 17 | 6 | 8.058 | 7.035 | 6 | 17 | 17 | 7 | | | | | | |
| 14" x 38# | 6.770 | 8.137 | 7.035 | 6 | 17 | 18 | 5 | 8.137 | 7.035 | 6 | 17 | 18 | 5 | 8.058 | 7.035 | 6 | 17 | 17 | 7 | | | | | | |

INSPECTION ITEMS

The trolley should be visually inspected for the following conditions:

- Loose locknuts
- Sideplate damage or bending
- Hanger plate wear, cracks or distortion
- Wheel wear, cracks, or worn bearings

Any worn parts should be replaced immediately. See Chart 2 for repair parts.

Chart 2 - Parts List (Refer to Figure 1)

| INDEX NO. PART NAME | 1 | 2 |
|------------------------|-------------------------------|----------------|
| | WHEEL & BALL BEARING ASSEMBLY | RETAINING RING |
| ET-05-A | 47027W | 1500-59 |
| ET-10-A | 47027W | 5100-59 |
| ET-20-A | 47030W | 5100-66 |
| ET-30-A | 47033 | 5100-98 |
| ET-40-A | 47033 | 5100-98 |
| ET-60-A | 47036W | 5100-118 |
| ET-100-A | 47039W | 5100-137 |

W-Beams

